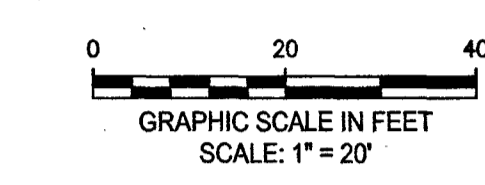
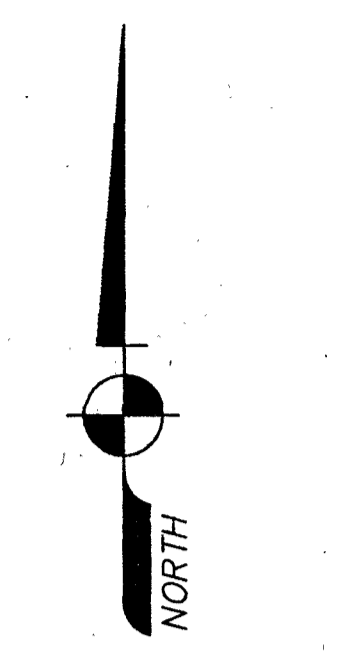


19

THIS INSTRUMENT WAS PREPARED BY:
JOHN T. DOOGAN, P.L.S.
AVIROM & ASSOCIATES, INC.
SURVEYING & MAPPING
50 S.W. 2ND AVENUE, SUITE 102
BOCA RATON, FLORIDA 33432
(561) 392-2594
OCTOBER 2022

WORTH COURT SOUTH

BEING A REPLAT OF LOT 11 AND LOT 12, WORTH COURT, ACCORDING TO THE PLAT THEREOF AS RECORDED IN PLAT BOOK 20, PAGE 60, OF THE PUBLIC RECORDS OF PALM BEACH COUNTY, FLORIDA. SAID LANDS LYING IN SECTION 3, TOWNSHIP 44 SOUTH, RANGE 43 EAST, CITY OF WEST PALM BEACH, PALM BEACH COUNTY, FLORIDA.



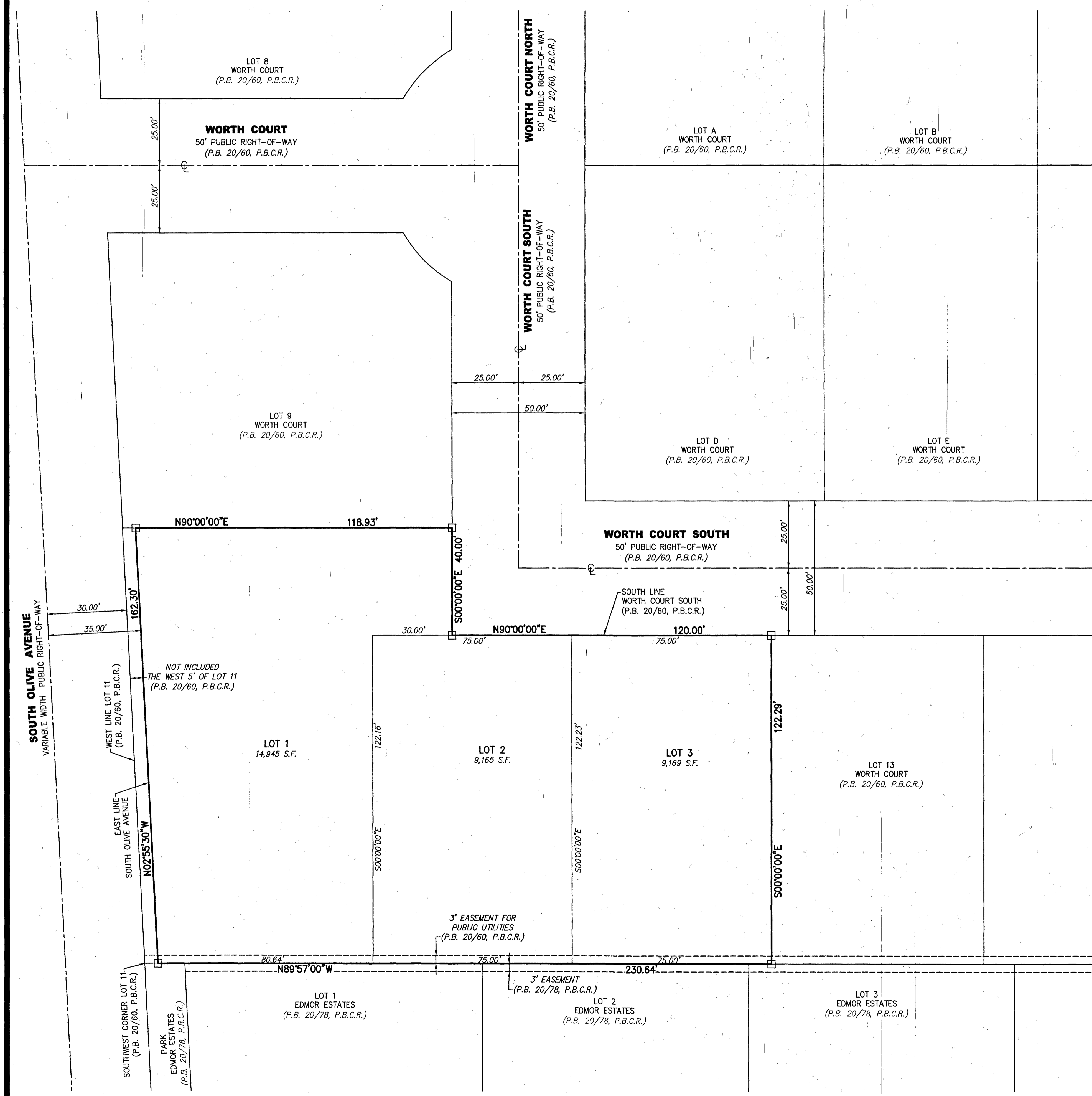
SHEET 2 OF 2 SHEETS

TABULAR DATA		
LOT 1	14,945 SQUARE FEET	0.343 ACRES
LOT 2	9,165 SQUARE FEET	0.210 ACRES
LOT 3	9,169 SQUARE FEET	0.211 ACRES
TOTAL AREA OF PLAT	33,279 SQUARE FEET	0.764 ACRES

SURVEYOR'S NOTES:

- NO BUILDINGS OR ANY KIND OF CONSTRUCTION OR TREES OR SHRUBS SHALL BE PLACED ON ANY EASEMENT WITHOUT PRIOR WRITTEN APPROVAL OF ALL EASEMENT BENEFICIARIES AND ALL APPLICABLE CITY APPROVALS OR PERMITS AS REQUIRED FOR SUCH ENCROACHMENTS.
- BEARINGS SHOWN HEREON ARE ASSUMED BASED ON THE SOUTH LINE OF WORTH COURT SOUTH HAVING A BEARING OF N90°00'00"E.
- DIMENSIONS SHOWN HEREON ARE IN FEET AND DECIMAL PARTS THEREOF AND ARE BASED ON THE DEFINITION OF FOOT AS ADOPTED BY THE UNITED STATES BUREAU OF STANDARDS AND REFER TO THE HORIZONTAL PLANE.
- BUILDING SETBACK LINES SHALL BE AS REQUIRED BY CURRENT ZONING REGULATIONS.
- NO UNDERLYING EASEMENTS ARE BEING ABANDONED BY THIS PLAT.
- ABBREVIATION LEGEND: Δ = CENTRAL ANGLE; C/L = CENTERLINE; T = TRANSPORTATION; L.B. = LICENSED; L = ARC LENGTH; O.R.B. = OFFICIAL RECORDS BOOK; P.B. = PLAT BOOK; P.B.C.R. = PALM BEACH COUNTY RECORDS; P.L.S. = PROFESSIONAL LAND SURVEYOR; PRM = PERMANENT REFERENCE MONUMENT; PSM = PROFESSIONAL LAND SURVEYOR; R = RADIUS; S.F. = SQUARE FEET.
- - INDICATES SET 4"x4"x24" CONCRETE MONUMENT WITH DISK STAMPED "PRM LB 3300".

NOTICE:
THIS PLAT AS RECORDED IN ITS GRAPHIC FORM, IS THE OFFICIAL DEPICTION OF THE SUBDIVIDED LANDS DESCRIBED HEREIN AND WILL IN NO CIRCUMSTANCES BE SUPPLANTED IN AUTHORITY BY ANY OTHER GRAPHIC OR DIGITAL FORM OF THE PLAT. THERE MAY BE ADDITIONAL RESTRICTIONS THAT ARE NOT RECORDED ON THIS PLAT THAT MAY BE FOUND IN THE PUBLIC RECORDS OF THIS COUNTY.



AVIROM & ASSOCIATES, INC.
SURVEYING & MAPPING
50 S.W. 2ND AVENUE, SUITE 102
BOCA RATON, FLORIDA 33432
TEL. (561) 392-2594, FAX (561) 394-7125
www.AVIROM-SURVEY.com
©2022 AVIROM & ASSOCIATES, INC. all rights reserved.
This sketch is the property of AVIROM & ASSOCIATES, INC. and should not be reproduced or copied without written permission.